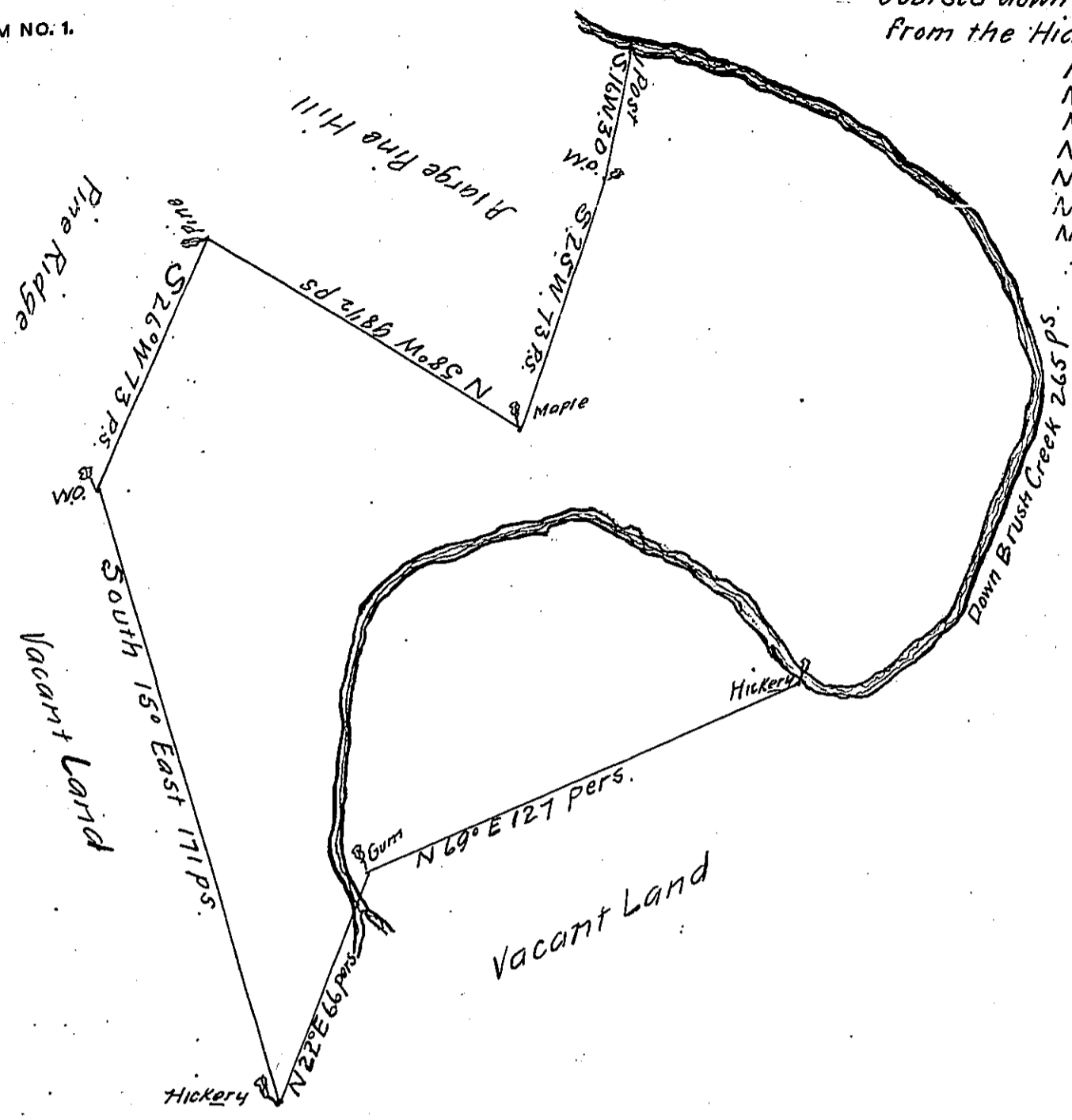


Courses down the Creek
From the Hickery

- N. 80° E 33
- N 40 E 24
- N 23 E 60
- N 20 W 42
- N 47 W 46
- N 70 W 40
- N 80 W 20 to
the post at the foot
of a Hill



A Draught of a Tract of Land situate on Brush Creek at a place called the Great Savannas in the County of Cumberland containing Two hundred and four acres and three quarters of an acre and the usual allowance of six acres p^{ct}. for Roads & ca - Surveyed the 26th day of June 1765 to John Allison Esq^r in pursuance of a Warrant dated the 8th day of June 1762

Richard Tea Dep^y Survey^r

To John Lukens Esq^r Survey^r Gen^l.

IN TESTIMONY that the above is a copy of the original remaining on file in the Department of Internal Affairs of Pennsylvania, made conformably to an Act of Assembly approved the 16th day of February, 1833, I have hereunto set my Hand and caused the Seal of said Department to be affixed at Harrisburg, this twelfth day of May 1911

Henry Howell
Secretary of Internal Affairs.